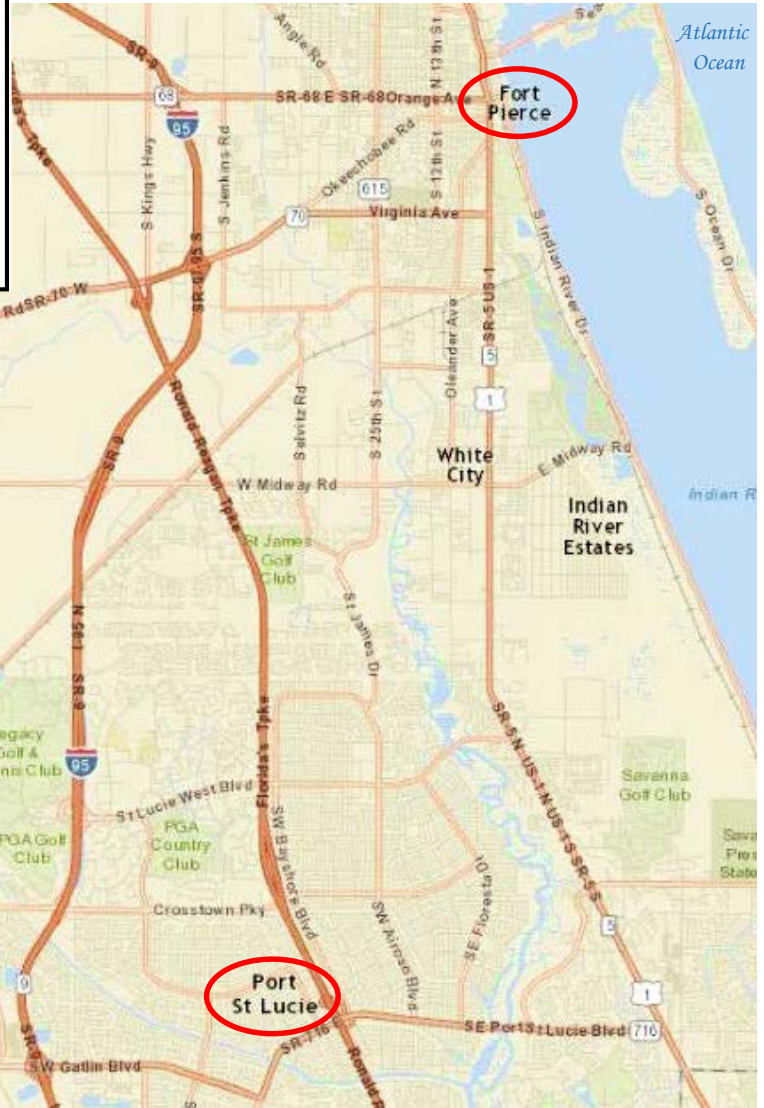
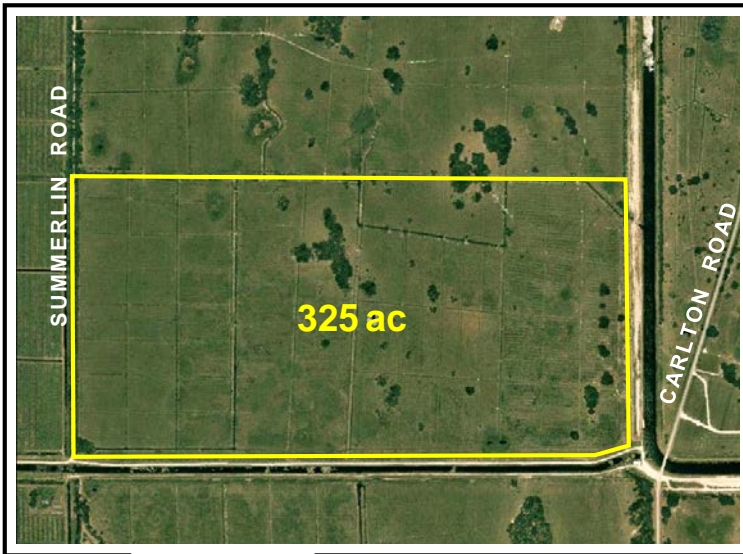


325±ac

# Agricultural Land

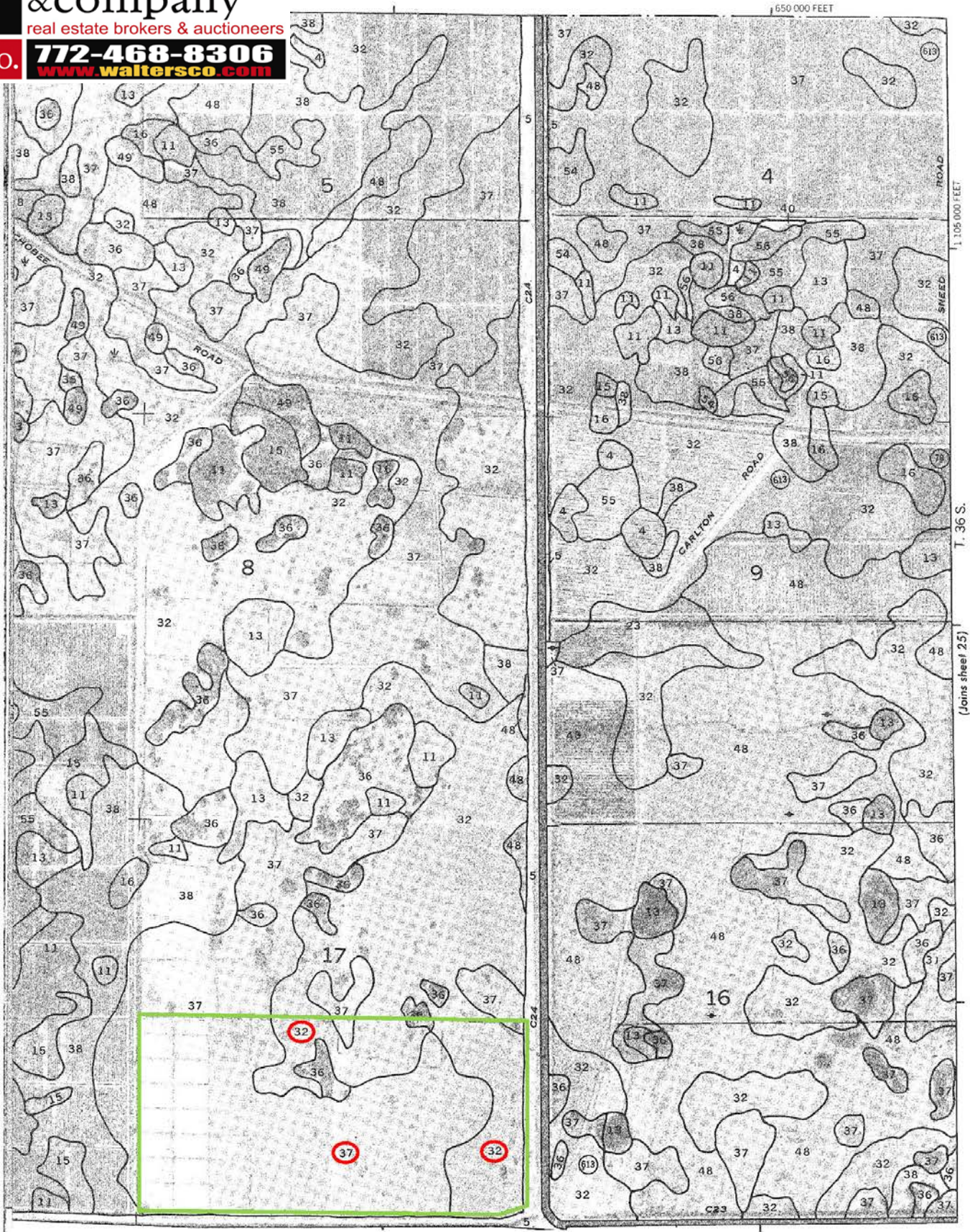
Summerlin Road, Saint Lucie County, FL

- Fenced & Cross Fenced
- Pineda & Riviera Soil Types
- Adjacent to C-23 & C-24 Canals



- 1 Mile Frontage on Canal C-23
- ½ Mile Frontage on Canal C-24 (Rim Ditch)
- Two SFWMD Drainage Culverts w/ Risers at the NE & SW corners of Parcel
- AG-5 Zoning; Currently under Ag-Exempt Tax Status for Cattle Grazing
- Additional Contiguous Acreage Available

**\$1,430,000.**



Soil Types: 32 - Pineda Sand  
37 - Riviera Sand, depressional